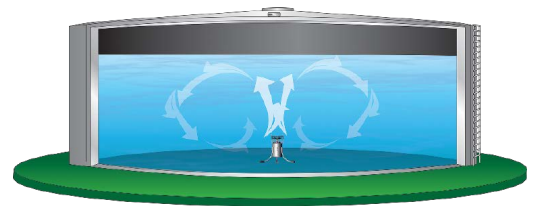


CertiSafe™ Mixers



BENEFITS OF A POWERFUL, ACTIVE MIXER

- Improves water quality
- Eliminates ice formation
- Minimizes residual loss
- Reduces thermal and chemical stratification
- Reduces differences in water taste and odor
- Reduces nitrification risk in chloraminated water
- Lowers the rate of disinfection by-product (DBP)
- Lowers the rate of sediment accumulation



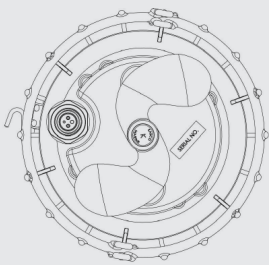
UNIT SPECIFICATIONS

Sizes Available	1/2HP, 3/4HP, 1HP and 2HP		
Electrical Requirements	120V, single phase, 60Hz (1/2HP, 3/4HP and 1 HP) 208-240V, single phase, 60Hz (3/4HP, 1HP and 2HP)		
Lubrication	Food-grade mineral oil		
Cord Lengths	Stub (32 in.), 50 ft., 100 ft., 200 ft.		
Amps	1/2HP, 120V - 5.7 3/4HP, 120V - 7	3/4HP 208-240V - 3.5 1HP 120V - 9.1	1HP 208-240V - 4.5 2HP 208-240V - 9
Warranty	3 years (applies to mixer, mount & control panel) Optional extended warranty available		

UNIT DIMENSIONS

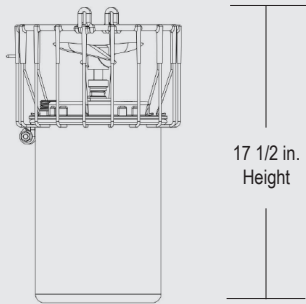
1/2, 3/4, 1 and 2HP

Unit Top



9.5 in. diameter

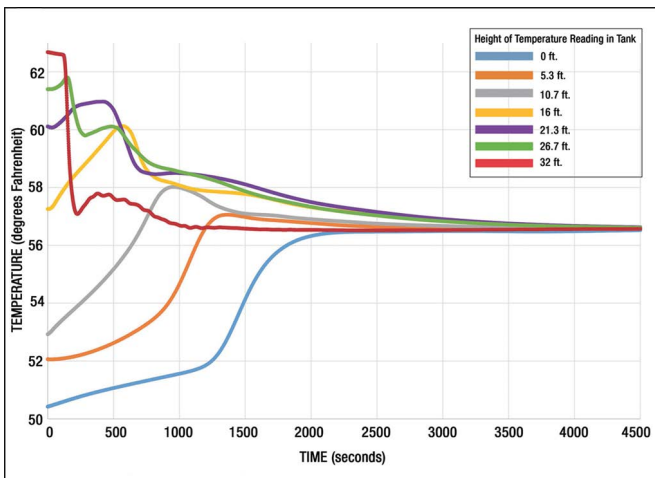
Unit Side



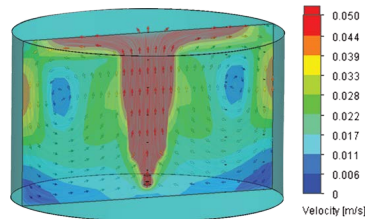
17 1/2 in. Height

MIXING CAPABILITIES

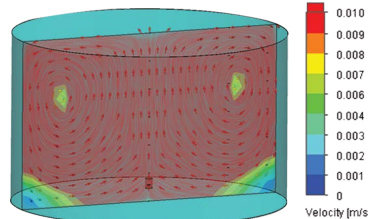
Computational fluid dynamics (CFD) and test results using a 3400C61 CertiSafe™ mixer to mix a .5 million gallon tank.



Results from thermal testing shows all layers of the tank converged within 40 minutes



Velocity representation



CFD indicating tank can be thoroughly mixed over time

MOUNTING

Install Kasco CertiSafe™ mixers in elevated and ground storage tanks with the available floor mount, pipe mount and suspended mounting options.



Pipe Mount

Floor Mount

CONTROL & MONITORING

UL LISTED CS-100 (120Volt) and CS-200 (230Volt) control panels are designed for easy installation and operation. Both include an H-O-A operator switch, LED indicator lights, SCADA I/O for remote control and monitoring, and automatic shut off feature if tank level drops below operating level.



Kasco®

Moving Water Forward, Since 1968

kascomarine.com

© Kasco Marine, Inc 05/2019